



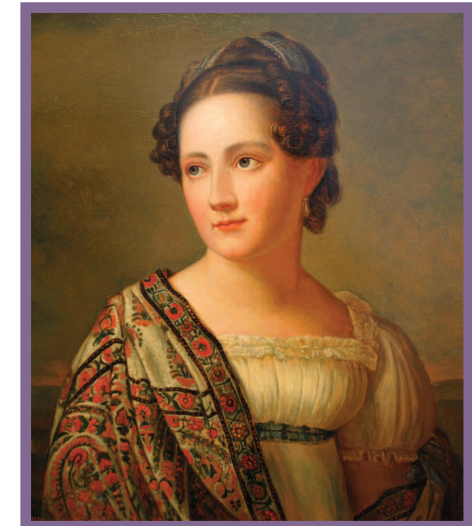
# Nineteenth Century Portrait

Oil on canvas

A delicately modelled portrait, this painting is a copy of an original which is in a private collection. The painting of the face is well executed and perfectly captures the qualities of a young woman's skin.

The main reason for commissioning work to the painting was to address a puncture and associated tear in the canvas. Along with this the client decided to commission the cleaning of the painting.

Damage caused by the puncture and associated tear was treated, and a patch repair applied to the reverse. A preliminary inspection with the aid of an ultra violet light showed that the painting had been restored before; there were areas of retouching in the face. So following varnish removal, retouching was needed to both the damaged canvas and to areas of the face. Finally the painting was re-coated with a conservation grade varnish.



Peter Martindale Conservation  
01722 714271 | 07767 200569  
[www.petermartindale.org.uk](http://www.petermartindale.org.uk)